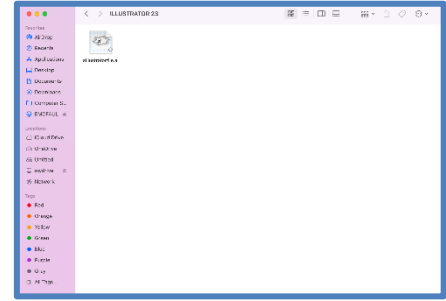


## OneDrive location

Open your **OneDrive folder**, and make sure your account is working, if you set it up will show up under the applications, on the left side of the menu, look under locations: **OneDrive** should show in that location. **Tap on** one of your files stored in your **OneDrive folder**, and then you can open it from that location, or begin a new document to save.

Your **OneDrive** will mount and open under the **Favorites menu, on the left side of the Application menu.**

**Tip:** A **quick way** to open files from any Adobe programs, is to store them in your **OneDrive**, and open them from your **personal drive location.**



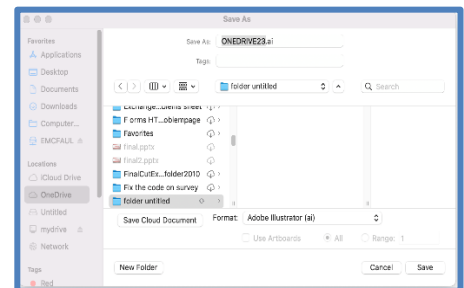
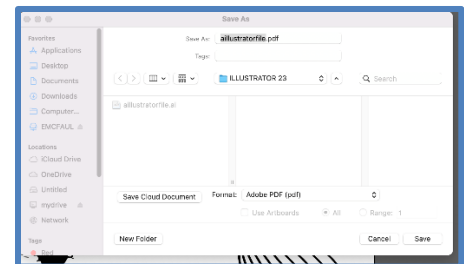
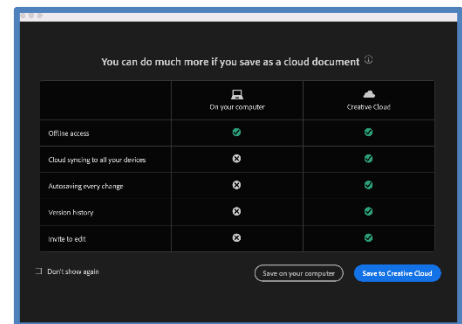
## New file and Folder Save from Illustrator

Open the **Illustrator** application, login with your **credentials**, and **design** a file. A **New Menu pops up.**

**Save on your computer**, then **file saves**, tap on **OneDrive** and a folder, and **tap on O.K.** Under the favorite **tap on the OneDrive to the left side.**

Tap on the **Middle section**, under the **Where:** section, tap on the **drop-down arrow to OneDrive.**

, to open the full menu, next to the **OneDrive tap on the drop-down arrow**, and to the left bottom corner, tap on the **New Folder button.** Type a name for the designs, **tap on the create button**, and save your document in the new location.



## Saving & Storing Tips

**Note:** Every **new file created** from any **Adobe** application, will need to **re-map** saving location on the Mac device. **Reminder:** Any file **open** from your **personal OneDrive** will **remain saved, stored, and secure** in your **OneDrive location.**